



MARKETING-PLAN-2020

BUSINESS-DOPING



CONTENTS

■ Concepts and terms	3
■ 7 sources of income!.....	4
■ 1st source of income. Use.....	6
■ 2nd source of income. Offer.....	7
■ 3rd source of income. Attract.....	8
■ 4th source of income. Master TianDe Club.....	14
■ 5th source of income. Star Marketing.....	15
■ 6th source of income. Autobonus.....	16
■ 7th source of income. Travel with TianDe.....	17
■ Income-generating opportunities in the TianDe Corporation..	19
■ Converting points into national currencies.....	25
■ Turbocharging your business.....	26

CONCEPTS AND TERMS

	A Distributor	is a physical person or legal entity who has obtained a registration number from a TianDe Brand Title Holder via an authorized Service (Dealership) Center, or completed registration on the Corporation's website, signed an agent agreement with an authorized TianDe Service Center, and operates in accordance with the current legislation and TianDe's Code of Ethics.
ID	The Distributor Number	is a computer reference number assigned to each Distributor upon registration in the TianDe Brand Title Holder Information Center. Each Distributor shall have only one Distributor Number.
SPONSOR	An Information Sponsor	is a Distributor in relation to a different Distributor whom the former personally attracted.
	Structure	means all Distributors of the Sponsor's organization to the last level, arranged in hierarchical order. Your first-level Distributors together with their organizations form the branches of your organization. The number of branches in your organization corresponds to your number of first-level Distributors.
PA	Personal Amount	means the purchases made by a Distributor personally over a month. It is taken into account during ranking and calculating the bonus discount. A monthly indicator.
SA	Structural Amount	means the sum of your PA and the PAs of all Distributors within your Structure regardless of their levels. A monthly indicator.
LEVEL	Generation	is the position of a Distributor within the Structure from the point of view of the Sponsor. A Distributor for whom a different Distributor is an Information Sponsor is considered his/her first generation. Accordingly, a second-generation Distributor is one whose Information Sponsor is a first-generation Distributor, and so on.
	Reporting Period	is one calendar month.
MPA	Minimum Personal Amount	is the Personal Amount of Distributors who get bonus discounts for the Structural Amounts of their Distributors. $MPA = 100 P$.
AD	Active Distributor	is a person who meets the Minimum Personal Amount requirements.
P	Point	is a conditional unit for measuring product value used to calculate the bonus discount.
	Qualification Month	is the calculated month within which a Distributor qualifies for a particular rank.
STATUS	Rank	is the indicator reflecting a Distributor's career progress.
BD	Bonus Discount	is a monthly bonus received by a Distributor in accordance with the Marketing Plan – 2020. It can be issued in the form of an agent's or commission fee.
	Director's Bonus	is awarded to Distributors in the rank of Director or higher.
	Distributor's Price	is the price at which products are acquired by Distributors registered in the Corporation.
	Regional Markup	the TianDe Business Community follows a single price policy. In cases involving remote territories or transportation issues, the TianDe Brand Title Holder has the right to recommend the percentage by which the retail price may be increased.
	Retail Price	is the price of products recommended by the TianDe Brand Title Holder and coordinated with the participants of the TianDe Business Community for sales to clients. Additional markup on the Distributor's Price is 54%. This is the fixed price for customers.
	Online Office	is a Distributor's personal web-office which shows the work (PA, SA, rank) of each Distributor in their Structure.



7

SOURCES OF
INCOME!

1

SOURCE OF
INCOME

USE



2

SOURCE OF
INCOME

OFFER



3

SOURCE OF
INCOME

ATTRACT



4

SOURCE OF
INCOME

MASTER TianDe CLUB



5

SOURCE OF
INCOME

STAR MARKETING



6

SOURCE OF
INCOME

AUTOBONUS



7

SOURCE OF
INCOME

TRAVEL WITH TianDe



1

SOURCE OF
INCOME

USE

tianDe®



**BUY TIANDE
CORPORATION PRODUCTS
AT 35% DISCOUNT.**



35% DISCOUNT





**1. EARN 54%
FROM RETAIL SALES.**

**2. GET A BONUS DISCOUNT FOR
YOUR PERSONAL AMOUNT ≥ 100 P –
FROM 5 TO 38% ACCORDING TO
YOUR RANK.**

FOR EXAMPLE

You purchased products in a TianDe Service Center or Dealership Center at Distributor's prices for the amount of € 200. The recommended markup on the product is 54%.



$$€ 200 + 54\% = € 308$$

$$€ 308 - € 200 = € 108$$

YOUR RETAIL SALE INCOME IS € 108.





1. GET A BONUS DISCOUNT FOR YOUR DISTRIBUTORS' SA – **FROM 5 TO 38%.**

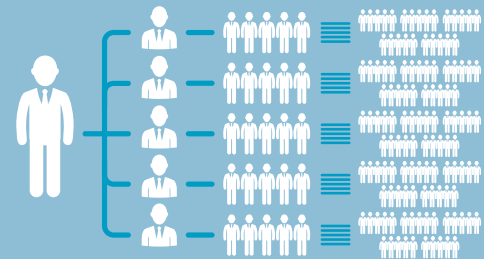
2. DIRECTOR'S BONUS.

When you become a Pearl Director or above, you will get a TianDe badge made of gold, with a precious stone inlaid.



The badge is presented on TianDe Day.

INFINITY BONUS



The Infinity bonus from the whole turnover of all generations of your Distributors is up to 38% in accordance with your rank

TABLE 1. BONUS DISCOUNTS (BD)

Rank	Minim. PA, P	SA, P	BD	Director's Bonus	Number of Directors on the first level
Consultant	< 100	—	0%	—	
VIP Client	100	100	5%	—	
Intern	100	300	10%	—	
Instructor	100	1,000	15%	—	
Partner	100	1,500	19%	—	
Master	100	3,000	23%	—	
Manager	100	5,000	27%	—	
Director	100	7,000	30%	5% from 5 levels of D*	
Grand Director	100	11,000	31%	5% from 5 levels of D, GrD	
Silver Director	100	15,000	32%	5% from 5 levels of D, GrD, SD	
Gold Director	100	25,000	33%	5% from 5 levels of D, GrD, SD, GD	
Pearl Director	100	50,000	34%	5% from 5 levels of D, GrD, SD, GD, PD	
Ruby Director	100	100,000	35%	5% from 5 levels of D, GrD, SD, GD, PD, RD	
Sapphire Director	100	300,000	36%	5% from 5 levels of D, GrD, SD, GD, PD, RD, SpD	
Emerald Director	100	600,000	37%	5% from 5 levels of D, GrD, SD, GD, PD, RD, SpD, ED	
Diamond Corps					
Diamond Director	100	900,000	38%	5% from 5 levels of D, GrD, SD, GD, PD, RD, SpD, ED, DD	4 RD**
Grand Diamond Director	100	3,000,000	38%	5% from 5 levels of D, GrD, SD, GD, PD, RD, SpD, ED, DD, Grand DD	4 RD**
Star Diamond Director	100	6,000,000	38%	5% from 5 levels of D, GrD, SD, GD, PD, RD, SpD, ED, DD, Grand DD, Star DD	4 RD**
Galaxy Diamond Director	100	10,000,000	38%	5% from 5 levels of D, GrD, SD, GD, PD, RD, SpD, ED, DD, Grand DD, Star DD, Galaxy DD	4 RD**

*5% from the PA of D (Director), 5% from the first level of D's Structure, 5% from the second level of D's Structure, 5% from the third level of D's Structure, 5% from the fourth level of D's Structure. Calculations for the next ranks are made in accordance with this example.

*** A one-off reward is given for achieving a certain SA in 3 months out of 6.

**1 Ruby Director =
2 Pearl Directors =
4 Gold Directors.

TABLE 2. BONUS DISCOUNTS DIFFERENCE

Rank	Rank	BD	C-nt	VIP	In	Ins	P	Mas	Man	D	GrD	SD	GD	PD	RD	SpD	ED	DC
Consultant	C-nt	0%	–															
VIP Client	VIP	5%	5%	–														
Intern	In	10%	10%	5%	–													
Instructor	Ins	15%	15%	10%	5%	–												
Partner	P	19%	19%	14%	9%	4%	–											
Master	Mas	23%	23%	18%	13%	8%	4%	–										
Manager	Man	27%	27%	22%	17%	12%	8%	4%	–									
Director	D	30%	30%	25%	20%	15%	11%	7%	3%	*								
Grand Director	GrD	31%	31%	26%	21%	16%	12%	8%	4%	1%	*							
Silver Director	SD	32%	32%	27%	22%	17%	13%	9%	5%	2%	1%	*						
Gold Director	GD	33%	33%	28%	23%	18%	14%	10%	6%	3%	2%	1%	*					
Pearl Director	PD	34%	34%	29%	24%	19%	15%	11%	7%	4%	3%	2%	1%	*				
Ruby Director	RD	35%	35%	30%	25%	20%	16%	12%	8%	5%	4%	3%	2%	1%	*			
Sapphire Director	SpD	36%	36%	31%	26%	21%	17%	13%	9%	6%	5%	4%	3%	2%	1%	*		
Emerald Director	ED	37%	37%	32%	27%	22%	18%	14%	10%	7%	6%	5%	4%	3%	2%	1%	*	
Diamond Corps	DC	38%	38%	33%	28%	23%	19%	15%	11%	8%	7%	6%	5%	4%	3%	2%	1%	*

DIRECTOR'S BONUS

*Director's Bonus

A Distributor in the rank of Director or higher receives additional amounts added to the difference between the 5% bonus discounts from the 5 levels of their Directors and above on the first level on condition of meeting the "75/25 RULE".

"75/25 RULE"

A Distributor (Sponsor) who achieves the rank of Director or higher, and has a Distributor (Distr. 1) on his/her first level in the rank of Director or higher, shall receive 5% from the 5 levels on condition that the Distributor's (Distr. 1) SA amounts to no more than 75% of the SA of the above Distributor (Sponsor).

"COMPRESSION RULE"

The Compression Rule applies when bonus discounts are calculated according to the results of the reporting period: every month, all active Distributors (PA ≥ 100 P) and their structures are advanced to the first active Distributor above them based on the results of the reporting period. After that, the ranks are assigned and bonus discounts are calculated.

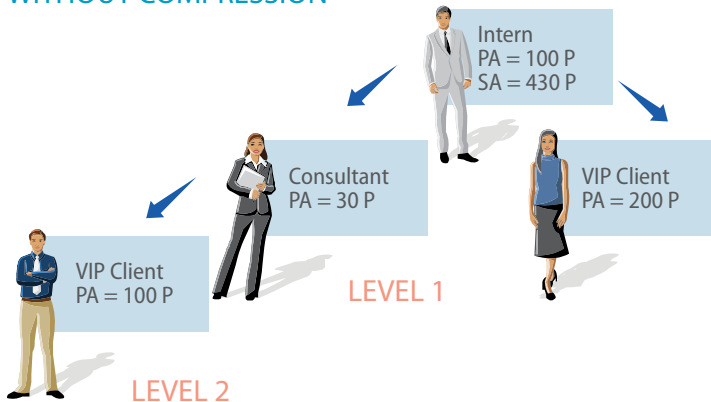
How do you calculate the "75/25 RULE" to get a DIRECTOR'S BONUS?

We calculate the SA share (Distr. 1) of your SA according to the following formula:

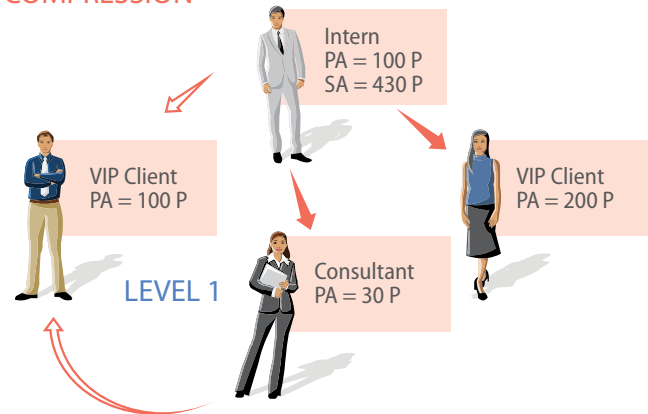
$$\text{SA share (Distr. 1)} = (\text{SA (Distr. 1)} / \text{your SA}) \times 100\%.$$

- If the Director's SA share (Distr. 1) > 75%, the Director's Bonus is not calculated.
- If the SA share (Distr. 1) ≤ 75%, the Director's Bonus is calculated.

YOUR STRUCTURE WITHOUT COMPRESSION



YOUR STRUCTURE WITH COMPRESSION



THE "COMPRESSION RULE" APPLIES ONLY WHEN CALCULATING BONUS DISCOUNTS!

SPONSOR'S EFFICIENCY COEFFICIENT (SEC)

The Sponsor's Efficiency Coefficient (SEC) stimulates Sponsors to develop various Distributor branches. Several Distributors are engaged in the Sponsor's first generation, and so consequently there are several branches in the structure.

ATTENTION!

If a Distributor fails to receive his/her bonus discount within 6 months in either a Dealership Center or a Service Center, it will be cancelled.

If a Distributor fails to purchase TianDe products within 6 months, his/her registration number will be cancelled and his/her structure passes over to the first Sponsor above him/her.

How do you calculate the SEC?

We calculate the SA shares of Distributors from your Level 1 according to the following formulae:

$$\text{SA share of Distr. 1} = (\text{SA (Distr. 1)} / \text{your SA}) \times 100\%$$

$$\text{SA share of Distr. 2} = (\text{SA (Distr. 2)} / \text{your SA}) \times 100\%$$

and so on.

If the SA share (Distr. 1, Distr. 2...) \leq 75%, SEC = 1.

If the SA share (Distr. 1, Distr. 2...) $>$ 75%, the Sponsor's Efficiency Coefficient is included in the calculation of the bonus from this branch.

TABLE 3. SPONSOR'S EFFICIENCY COEFFICIENT (SEC)

Branch's share	$\leq 75\%$	76%	77%	78%	79%	80%	81%	82%	83%	84%	85%	86%	87%
Coefficient	1	0.960	0.930	0.910	0.900	0.860	0.830	0.810	0.800	0.760	0.720	0.710	0.700

Branch's share	88%	89%	90%	91%	92%	93%	94%	95%	96%	97%	98%	99%	100%
Coefficient	0.600	0.550	0.500	0.450	0.400	0.375	0.365	0.355	0.345	0.335	0.325	0.315	0.300

How do you calculate your bonus discount?

- The Corporation's products have both a monetary and points value.
- You buy products – your points are calculated.
- You recommend the people you know to buy products – your points are again calculated.
- Your SA is calculated on the basis of all amounts you accumulate every month:

Your PA + PAs of all your Distributors = your SA (Structural Amount).

- SA is measured in points.

YOUR STRUCTURAL AMOUNT DETERMINES:

your rank; % of your bonus discount, i.e. your income for building the network.

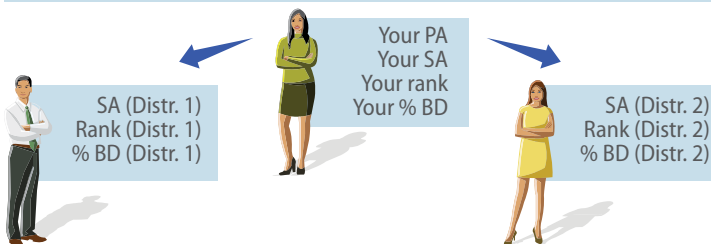
TO CALCULATE YOUR BONUS DISCOUNT (BD), YOU HAVE TO KNOW THE FOLLOWING INDICATORS.

1. Your PA and SA in points.
2. Your rank and % of your bonus discount (Table 1).
3. SA of your Distributors from your Level 1 in points.
4. Ranks and % of the bonus discount for Distributors from your Level 1 (Table 1).
5. SEC (Sponsor's Efficiency Coefficient).
6. Application of the 75/25 Rule for getting the Director's Bonus.

FOR EXAMPLE

You have 2 Distributors on Level 1 in your structure: Distr. 1, Distr. 2. Let's agree to designate your Distributors' indicators as follows:

for Distr. 1: SA (Distr. 1), rank (Distr. 1), % BD (Distr. 1);
for Distr. 2: SA (Distr. 2), rank (Distr. 2), % BD (Distr. 2).



Bonus discount calculation

The bonus discount for your PA, P (Personal Amount in points) is:

your PA x your % BD (according to Table 1) x X = BD.

The bonus discount for SA, P (Structural Amount in points) of your first-level Distributors is:

SA (Distr. 1) x (your % BD - % BD (Distr. 1)) x X x SEC = BD;

SA (Distr. 2) x (your % BD - % BD (Distr. 2)) x X x SEC = BD.

X – point value in your national currency (Table 5).

**WHAT DOES CLUB MEMBERSHIP GIVE YOU?**

- ✔ Professional training in the art of sales;
- ✔ the latest business information;
- ✔ VIP contacts with the Corporation's partners;
- ✔ preferential terms for attending workshops conducted by the leading MLM-industry coaches arranged by TianDe;

- ✔ free participation in monthly Club sessions;
- ✔ master classes in products and business given by the Corporation's best experts;
- ✔ taking part in promotion programs and events on special terms;
- ✔ priority when purchasing new TianDe products; the exclusive right to purchase unique products of the Corporation at favorable prices.

**EXPANDING TRADE
TURNOVER****How do you join the Club and
become a TianDe Master?**

1. Achieve PA \geq 1,000 points during 3 months in a row.
2. Confirm Club membership:
 - during the next 2 months, you have the right to achieve PA \geq 250 points,
 - PA \geq 1,000 points no less than once in 3 months.



**ONE-OFF CASH REWARD**

The TianDe Marketing Plan encourages and rewards Leaders who actively develop Directors' structures on their Level 1.

ATTENTION!

ONLY first-level Leaders are taken into account for getting a reward! The Compression Rule is not applied!

TABLE 4. REWARDS

ONE-OFF REWARD, €	TERMS FOR GETTING REWARDS			
	Rank	Number of Leaders with SA ≥ 10,000 P	SEC	Number of months within which you are required to meet certain criteria
41,250*	Diamond Corps	9	1	3 out of 6
27,500*	Emerald Director	8	1	3 out of 6
13,750*	Sapphire Director	7	1	3 out of 6
4,950*	Ruby Director	5	1	3 out of 6
2,475*	Pearl Director	3	1	3 out of 6
1,237*	Gold Director	2	1	3 out of 6
687*	Silver Director	1	1	3 out of 6

*It is paid only if the terms are met for the first time since the moment of the application's registration. Payments of the following one-off rewards are made at least 3 months after receipt of the previous one.



**ONE-OFF CASH
REWARD**



SOURCE OF
INCOME

AUTOBONUS

tianDe®



TIANDE. AUTO. EASY! PROGRAM

OBLIGATORY JOINING TERMS:

- 1) complete TianDe Business ABC training;
- 2) attend the annual TianDe Day event.

AUTOPROGRAM PERIOD:

till June 1, 2016. On meeting the terms, the autobonus is calculated within 36 months from the first autobonus's calculation.

PARTICIPANTS:

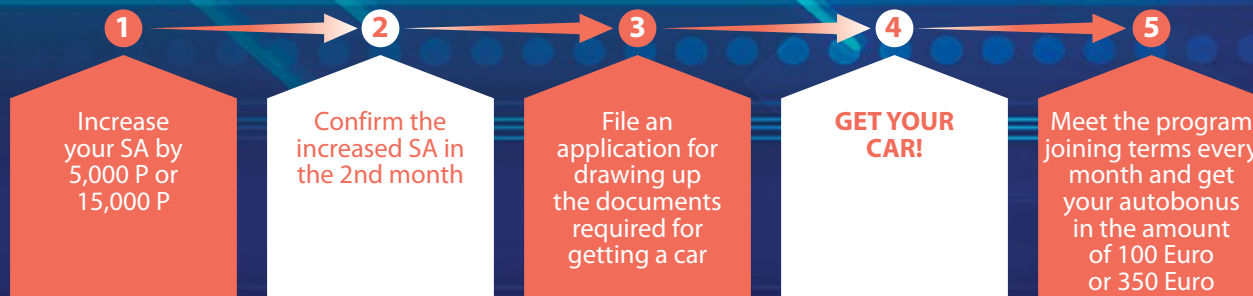
All partners of the Corporation in the rank up to Gold Director based on the results for May, 2015.



TIANDE. AUTO. EASY



Learn about the
autoprogram terms
in detail



ADVANTAGES OF THE TIANDE. AUTO. EASY! PROGRAM

1. Special price for cars for TianDe partners.
2. Easy terms and minimum period for joining the program: increase the SA and confirm it in the following month.
3. Buy a car on credit at special interest rates for TianDe partners!
4. A chance to buy a car on credit both with a down payment and without one.
5. You meet the autoprogram terms – the Corporation repays your autocredit.

7

SOURCE OF
INCOME

TRAVEL WITH TianDe

tianDe®



TRIPS WITH THE TIANDE CORPORATION

Visit the best sights on the globe at the Corporation's expense. Make a considerable contribution to your personal development and family finances.

"WORLD CAPITAL VOYAGE"

Paris, Rome, Madrid, Beijing... TianDe partners visit the best world capitals every year.



**VISIT THE BEST SIGHTS
ON THE GLOBE AT THE
CORPORATION'S EXPENSE**



ACHIEVE **ALL** THE SOURCES OF INCOME **AT ONCE!**



Buy TianDe Corporation products at favorable prices.



Earn 54% of retail sales.

If the bonus discount for your Personal Amount ≥ 100 P – you get from 5 to 38% according to your rank.



The bonus discount for your Distributors' SA is from 5 to 38%.

Director's Bonus.



Enjoy the TianDe Master's benefits.



One-off cash reward for Star Marketing.



Get your car at the company's expense.



Travel with the TianDe Corporation.

INCOME-GENERATING OPPORTUNITIES IN THE TianDe CORPORATION



HOW DO YOU ACHIEVE A DIRECTOR'S RANK?

EXAMPLE 1.

STEP 1: collect orders and get your immediate profit.

Start making monthly orders for products valued at 250 points. You purchased products for 250 points (approximately € 225).

The recommended markup on products is 54%.

$€ 225 + 54\% = € 346$.

Your retail sale income is € 121.

$€ 346 - € 225 = € 121$.

And this is just the first step to success!

STEP 2: invite 15 people you know to the TianDe Corporation every month.

Statistically, out of 15 people registered within a month:

10 people become consumers and buy products for themselves for 50 points on average at a discount;

5 people become your partners and decide to start a business from a purchase for 100 points.

STEP 3: go on inviting 15 people you know to the company every month. Increase your partners' turnover.

In the 2nd month of work:

5 of your partners increase their PA from 100 to 250 points;

5 out of 10 consumers invited by you in the previous month decide to become your partners and start purchasing products for 100 points, increasing turnover every month.

So, in the 3rd month of work it turns out that all your partners increase their PAs (from 100 points to 250 points for taking part in the second-level Stable Sales promotion program).

Overall, you have 45 people on your first level:

20 people x 50 points, 10 people x 100 points,
10 people x 250 points, 5 people x 1,000 points.

It means that:

- 20 people you know will become customers and will purchase products for 50 points;
- 10 people will be making orders for 100 points;
- 10 people will be making orders for 250 points like you and take part in the second-level Stable Sales promotion program (see the terms on the Corporation's website);
- 5 people will become TianDe Masters, i.e. will purchase products for 1000 points.

We calculate your Structural Amount:

your PA = 250 P;

your first-level amount: 20 people x 50 P + 10 people x 100 P + 10 people x 250 P + 5 people x 1,000 P = 9,750 P.

Your total SA = 9,750 P.

Calculation

Your rank is Director, your BD according to Table 1 = 30%.

You get the following from your first-level Distributors' SA according to Table 1:

(30% - 0%) = 30% of the turnover of Distributors with PA = 50 P;
(30% - 5%) = 25% of the turnover of Distributors with PA = 100 P;
(30% - 5%) = 25% of the turnover of Distributors with PA = 250 P;
(30% - 15%) = 15% of the turnover of Masters with PA = 1,000 P.

1. PA x 30% = 250 P x 30% = 75 P.

2. From your first-level Distributors' SA:

50 P x 20 people = 1,000 P x 30% = 300 P;
100 P x 10 people = 1,000 P x 25% = 250 P;
250 P x 10 people = 2,500 P x 25% = 625 P;
1,000 P x 5 people = 5,000 P x 15% = 750 P.

Total: 2,000 P.

We use Table 5 to convert points into national currencies.
 $2,000 P \times 0.55 = € 1,100$.

Your income, total:

€ 121 + € 1,100 = € 1,221

INCOME-GENERATING OPPORTUNITIES IN THE TianDe CORPORATION



SIMPLE FORMULA: 6 MASTERS – AND YOU ARE A DIRECTOR!

EXAMPLE 2

STEP 1: become a TianDe Master – buy products for 1,000 points every month and get the following benefits:

- the exclusive right to purchase unique TianDe products;
- special offers and participation in the Club's promotional programs;
- preferential terms for attending workshops conducted by the leading MLM industry coaches;
- priority when purchasing new TianDe products;
- free participation in Club sessions;
- master classes in products and business given by the Corporation's best experts;
- participation in contests and promotion events based on the results for the year.

STEP 2: invite 6 Masters to your Level 1.

Your retail sales income is 1,000 points – approximately € 900 at the Distributor's price. The recommended markup is 54%.
 $\text{€ } 900 + 54\% = \text{€ } 1,386$.

Your income: € 1,386 - € 900 = € 486.

Bonus Discount according to the Marketing Plan

Your PA = 1,000 P.

Your first-level amount: 6 people x 1,000 P = 6,000 P.

Your total SA = 7,000 P.

Calculation

Your rank – Director, your BD according to Table 1 = 30%.

Your 6 first-level Masters' SA = 1,000 P.

The rank of Master 1, 2...6 is Instructor, BD of Distributor 1, 2...6 = 15%.

1. PA x 30% = 1,000 P x 30% = 300 P.

2. From your 6 first-level Masters' SA:

$1,000 \text{ P} \times (30\% - 15\%) = 150 \text{ P} \times 6 \text{ people} = 900 \text{ P}$.

Total: 1,200 P.

We use Table 5 to convert points into national currencies.

$1,200 \text{ P} \times 0.55 = \text{€ } 660$

Your income, total:

€ 486 + € 660 = € 1,146

(\$) HOW TO EARN USD 1,000?

EXAMPLE 3.

STEP 1: you are a TianDe Master. Your PA = 1,000 P. Your retail sale income: € 486 (see the previous example).

1	2	3	4	5	6	7	8	9
Who	Number of people per week	Number of people per month	Number of people for 3 months	Average monthly PA per 1 person, P	Turn-over for 3 months, P	% of personal income	Your income for 3 months, P	Your income for 3 months, €
You				1,000	1,000	31%	310	170
Customer	3	12	36	50	1,800	31%	558	307
Partner	2	7	21	250	5,250	26%	1,365	751
Master	0	1	3	1,000	3,000	16%	480	264
Total	5	20	60	-	11,050		2,713	1,492

INCOME-GENERATING OPPORTUNITIES IN THE TianDe CORPORATION



STEP 2: register 5 new recruits every week to work in TianDe.

Invite 15 people a week for a meeting or presentation. Statistically, 5 of them respond to the offer and register in the Corporation.

There are three categories of new recruits registered in the Corporation (column 1):

- customer (buys products for himself/herself at a discount). Average monthly number of points per 1 person – 50;
- partner (comes to the TianDe Corporation to build his/her business). Average monthly number of points per 1 person – 250;
- Master (Distributor, member of the Master TianDe Club, using all its benefits). Average monthly number of points per 1 person – 1,000.

So, you register 5 new recruits within one week: 3 customers, 2 partners (column 2).

STEP 3: repeat invitations.

Total:

- you registered 20 new recruits within one month: 12 customers, 8 partners, 1 of whom achieved the Master's turnover;
- 60 new recruits will come to your structure within 3 months: 36 customers, 21 partners and 3 Masters (column 4).

In total, there will be 60 people on your Level 1.

Your structure's turnover for month 3 (column 6):

your PA = 1,000 P;

36 customers will sell products for 1,800 P

(36 people x 50 P = 1,800 P);

21 partners – for 5,250 P (21 people x 250 P = 5,250 P);

3 Masters – for 3,000 P (3 people x 1,000 P = 3,000 P).

Total: 11,050 P.

STEP 4: we calculate your income.

Your structure's SA for month 3, including your PA = 1,000 P, amounted to 11,050 P.

Your rank is Grand Director, your BD according to Table 1 = 31%.

The rank of customers is Consultants, BD according to Table 1 = 0%.

The rank of partners is VIP Client, BD according to Table 1 = 5%.

The rank of Masters is Instructors, BD according to Table 1 = 15%.

You get from your first-level Distributors' SA:

(31% - 0%) = 31% of the customers' turnover (1,800 points);

(31% - 5%) = 26% of the turnover of partners achieving 5% (5,250 points);

(31% - 15%) = 16% of the turnover of Masters achieving 15% (3,000 points).

Calculation (columns 8 and 9):

1. PA x 31% = 1,000 P x 31% = 310 P.

2. From your first-level customers' SA:

1,800 P x 31% = **558 P;**

From your first-level partners' SA:

5,250 P x 26% = **1,365 P;**

From your first-level Masters' SA:

3,000 P x 16% = **480 P.**

Total: 2,713 P.

We use Table 5 to convert points into national currencies.

2,713 P x 0.55 = € 1,492.

Your income for month 3 of work, total:

€ 486 + € 1,492 = € 1,978

INCOME-GENERATING OPPORTUNITIES IN THE TianDe CORPORATION



€ **IT IS POSSIBLE TO EARN € 15,000
EVEN WHEN MAKING MINIMUM
PURCHASES FOR 100 POINTS!**

EXAMPLE 4

Apply the Duplicating Rule: invite 5 partners to your Level 1, who in turn do the same – they will work according to the system and build their own structure.

In the ideal variant, you will get duplication divisible by five: 5 people on your Level 1, 25 on Level 2, 125 on Level 3, 625 on Level 4, and 3,125 on Level 5.

Levels	Number of people	Average monthly PA per 1 person, P	Monthly turnover, P
You	1	100	100
1	5	100	500
2	25	100	2,500
3	125	100	12,500
4	625	100	62,500
5	3,125	100	312,500
Total	3,906		390,600

Your PA = 100 P.

Your structure consists of 5 levels (see columns 2 and 3):

Level 1 – 5 people per 100 P;
Level 2 – 25 people per 100 P;
Level 3 – 125 people per 100 P;
Level 4 – 625 people per 100 P;
Level 5 – 3,125 people per 100 P.

Total: 3,906 people (yourself included) per 100 P.

Your SA = 3,906 people x 100 P = 390,600 P.

Your rank is Sapphire Director, BD according to Table 1 = 36%.

Your first-level Distributors' SA:

$(312,500 + 62,500 + 12,500 + 2,500 + 500) / 5 \text{ people} = 78,100 \text{ P.}$

The rank of your 5 first-level Distributors is Pearl Director, BD according to Table 1 = 34%.

Calculation

1. PA = 100 P x 36% = 36 P.

2. From your first-level Distributors' SA:

SA 1 x (36% - 34%) = 78,100 P x 2% = 1,562 P;

SA 2 x (36% - 34%) = 78,100 P x 2% = 1,562 P;

SA 3 x (36% - 34%) = 78,100 P x 2% = 1,562 P;

SA 4 x (36% - 34%) = 78,100 P x 2% = 1,562 P;

SA 5 x (36% - 34%) = 78,100 P x 2% = 1,562 P.

Total from SA: 7,810 P.

3. Director's Bonus (5% from 5 levels of your first-level Directors).

The whole Directors' structure is on the first 5 levels of your structure:

Director's Bonus 1: 78,100 P x 5% = 3,905 P;

Director's Bonus 2: 78,100 P x 5% = 3,905 P;

Director's Bonus 3: 78,100 P x 5% = 3,905 P;

Director's Bonus 4: 78,100 P x 5% = 3,905 P;

Director's Bonus 5: 78,100 P x 5% = 3,905 P.

Director's Bonus, total: 19,525 P.

Total: 27,371 P.

We use Table 5 to convert points into national currencies.
 $27,371 \text{ P} \times 0.55 = € 15,054$

Your income, total: € 15,054

INCOME-GENERATING OPPORTUNITIES IN THE TianDe CORPORATION



**IF YOU AND THE DISTRIBUTORS FROM
YOUR STRUCTURE WILL BE ACHIEVING
THE PA EQUAL TO 200 POINTS, YOUR
INCOME WILL AMOUNT TO € 30,000
PER MONTH!**

EXAMPLE 5

Levels	Number of people	Average monthly PA per 1 person, P	Monthly turnover, P
You	1	200	200
1	5	200	1,000
2	25	200	5,000
3	125	200	25,000
4	625	200	125,000
5	3,125	200	625,000
Total	3,906		781,200

The bonus discount is calculated similar to the previous example.

Your PA = 200 P.

Your SA = 3,906 people x 200 P = 781,200 P.

Your rank is Emerald Director, BD according to Table 1 = 37%.

Your first-level Distributors' SA: 156,200 P.

The ranks of your 5 first-level Distributors is Ruby Director, BD according to Table 1 = 35%.

Calculation

1. PA = 200 P x 37% = 74 P.

2. From your first-level Distributors' SA:

SA 1 x (37% - 35%) = 156,200 P x 2% = 3,124 P;

SA 2 x (37% - 35%) = 156,200 P x 2% = 3,124 P;

SA 3 x (37% - 35%) = 156,200 P x 2% = 3,124 P;

SA 4 x (37% - 35%) = 156,200 P x 2% = 3,124 P;

SA 5 x (37% - 35%) = 156,200 P x 2% = 3,124 P.

Total from SA: 15,620 P.

3. Director's Bonus (5% from 5 levels of your first-level Directors).

The whole Directors' structure is on the first 5 levels of your structure:

Director's Bonus 1: 156,200 P x 5% = 7,810 P;

Director's Bonus 2: 156,200 P x 5% = 7,810 P;

Director's Bonus 3: 156,200 P x 5% = 7,810 P;

Director's Bonus 4: 156,200 P x 5% = 7,810 P;

Director's Bonus 5: 156,200 P x 5% = 7,810 P.

Director's Bonus, total: 39,050 P.

Total: 54,744 P.

We use Table 5 to convert points into national currencies.
54,744 P x 0.55 = € 30,109.

Your income, total: € 30,109

INCOME-GENERATING OPPORTUNITIES IN THE TianDe CORPORATION



**IF YOU AND THE DISTRIBUTORS FROM
YOUR STRUCTURE WILL BE ACHIEVING
THE PA EQUAL TO 250 POINTS, YOUR
€ INCOME WILL AMOUNT TO € 40,000 PER
MONTH!**

EXAMPLE 6

Levels	Number of people	Average monthly PA per 1 person, P	Monthly turnover, P
You	1	250	250
1	5	250	1,250
2	25	250	6,250
3	125	250	31,250
4	625	250	156,250
5	3,125	250	781,250
Total	3,906		976,500

The bonus discount is calculated similar to the previous example.

Your PA = 250 P.

Your SA = 3,906 people x 250 P = 976,500 P.

Your rank is Diamond Director, BD according to Table 1 = 38%.

Your first-level Distributors' SA: 195,250 P.

The ranks of your 5 first-level Distributors is Ruby Director, BD according to Table 1 = 35%.

Calculation

1. PA = 250 P x 38% = 95 P.

2. From your first-level Distributors' SA:

SA 1 x (38% - 35%) = 195,250 P x 3% = 5,857 P;

SA 2 x (38% - 35%) = 195,250 P x 3% = 5,857 P;

SA 3 x (38% - 35%) = 195,250 P x 3% = 5,857 P;

SA 4 x (38% - 35%) = 195,250 P x 3% = 5,857 P;

SA 5 x (38% - 35%) = 195,250 P x 3% = 5,857 P.

Total from SA: 29,285 P.

3. Director's Bonus (5% from 5 levels of your first-level Directors).

The whole Directors' structure is on the first 5 levels of your structure:

Director's Bonus 1: 195,250 P x 5% = 9,762 P;

Director's Bonus 2: 195,250 P x 5% = 9,762 P;

Director's Bonus 3: 195,250 P x 5% = 9,762 P;

Director's Bonus 4: 195,250 P x 5% = 9,762 P;

Director's Bonus 5: 195,250 P x 5% = 9,762 P.

Director's Bonus, total: 48,810 P.

Total: 78,190 P.

We use Table 5 to convert points into national currencies.
78,190 P x 0.55 = € 43,004

€ Your income, total: € 43,004

TABLE 5. CONVERTING POINTS INTO NATIONAL CURRENCIES

State	Currency	1 P value at the current rate
 Poland	Polish Zloty (PLN)	2.31
 Czech Republic	Czech Koruna (CZK)	15
 European Union	Euro (EUR)	0.55



**WOULD YOU LIKE TO TURBOCHARGE YOUR
BUSINESS, DEVELOP YOUR STRUCTURE QUICKLY
AND INCREASE YOUR INCOME?**

**READY-MADE BUSINESS SOLUTIONS ARE
PRESENTED AT THE CORPORATION'S EVENTS!**



**ATTEND THEM TOGETHER
WITH YOUR TEAM!**





ANNUAL TIANDE FESTIVALS



SEA COCKTAIL ELITE FESTIVAL

Crimea, Turkey, Croatia, Thailand, the island of Bali, the Maldives, Dominican Republic... TianDe festivals take place in the best parts of the world.



TIANDE DAY

Celebrating the Corporation's birthday is always a spectacular show and large-scale business conference.



UNIQUE HR TRAINING SYSTEM:

- ✓ training of new consultants;
- ✓ training in professional Sponsor's skills;
- ✓ training in products allowing you to work with clients at the expert level;
- ✓ franchise training – highly skilled managers for Dealership Centers and Service Centers.

WHAT DOES ATTENDING THE CORPORATION'S EVENTS GIVE YOU?

- ✓ **CURRENT INFORMATION ABOUT THE COMPANY, SPECIAL OFFERS AND PROMOTION PROGRAMS PRESENTED BY THE CHIEF EXECUTIVES OF THE CORPORATION!**
- ✓ **RECOGNITION ON SOME SPLENDID STAGES IS A STRONG MOTIVATION FOR ACTION!**
- ✓ **RAPID BUSINESS DEVELOPMENT!**





tiande®



Code: 100256

www.tiande.eu

